



Evolution / Evolution-SR

ASSEMBLY INSTRUCTIONS

SCHWINN FITNESS

| Ref. # | Description | Qty. |
|---------------|---|-------------|
| 1. | Frame | 1 |
| 25. | Handle Bar | 1 |
| 27. | Seat Slider Assembly with Saddle | 1 |
| A | Front Stabilizer Bar with Wheels and Feet | 1 |
| B | Rear Stabilizer Bar with Feet | 1 |
| | Small Parts Box | 1 |
| 67 | Water Bottle Cage | 2 |

Small Part Box Contents

| | | |
|-----|---|--------|
| 42. | Pedals with Toe Clips & Straps (Left & Right) | 1 Pair |
| 44. | Pop Pin Assembly for Head Tube | 1 |
| 39. | 13mm Hex Bolt | 4 |
| 50. | Flat Washer | 8 |
| 51. | 13mm Lock Nut | 4 |

Tools Supplied

| | |
|--|---|
| Stamped Steel 13/14/15/17mm Combination Wrench | 1 |
| 5mm Hex Wrench | 1 |
| 3mm Hex Wrench | 1 |

Prior to assembly of the product, remove all components from the packaging and check them against the packaged components list supplied above. Once you are certain that all the necessary parts have been supplied, begin with the first assembly step.

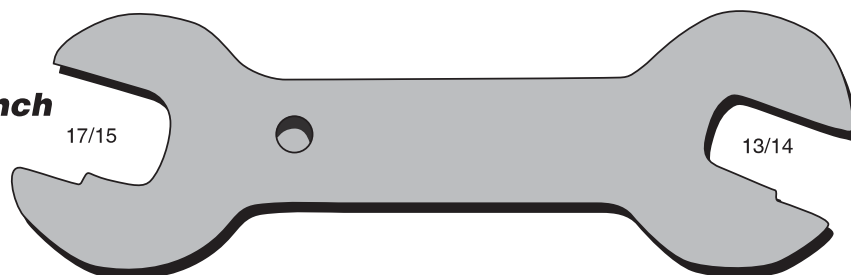
Tools Needed

5mm Hex Wrench

3mm Hex Wrench

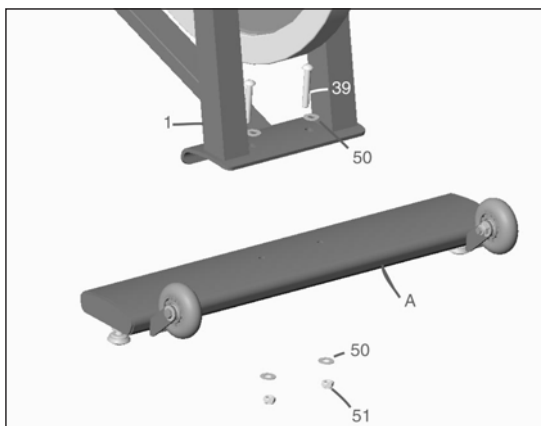


**Stamped Steel
Combination wrench**

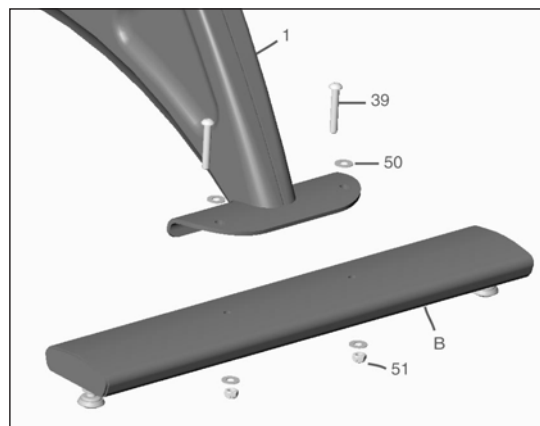


Adjustable wrench (not included)

Front



Rear



| Ref. # | Description | Qty |
|---------------|---|------------|
| 1 | Frame | 1 |
| A | Front Stabilizer Bar with Wheels and Feet | 1 |
| B | Rear Stabilizer Bar with Feet | 1 |
| 39 | 13mm Hex Bolt | 4 |
| 50 | Flat Washer | 8 |
| 51 | 13mm Lock Nut | 4 |

Tools Required

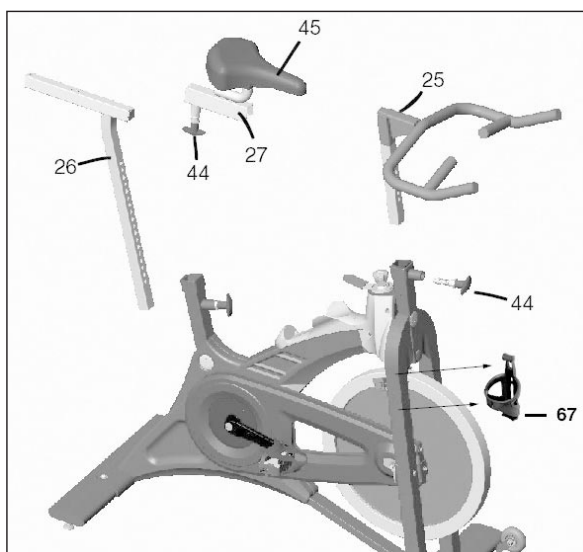
| | |
|---|---|
| Stamped Steel Combination Wrench | 1 |
| Adjustable wrench or 13mm Socket (not supplied) | 1 |
| 5mm Hex Tool | 1 |

- A. Position the Front Stabilizer Bar (A) under the frame bracket as shown in the illustration.
- B. Make sure the adjustable feet are on the bottom and the transport wheels are facing up and toward the front of the bike.

CAUTION:

IT IS VERY IMPORTANT TO APPLY GREASE TO THE 13mm HEX BOLT (39) PRIOR TO MOUNTING THE 13mm LOCKNUT (51) THIS WILL ENSURE THAT YOU CAN REMOVE THE NUT AT A LATER DATE.

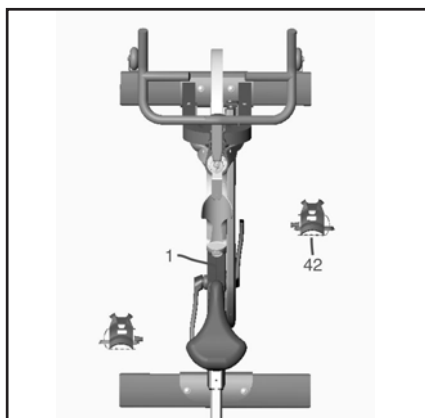
- C. Attach Front Stabilizer Bar (A) to Frame (1) using two hex bolts (39), four washers (50), and two lock nuts (51). Tighten hardware firmly but do not over tighten as deformation of the stabilizer tube may occur
- D. At this time make sure that the adjustable feet with lock nuts are screwed fully into the stabilizer.
- E. Position the Rear Stabilizer Bar (B) under the frame bracket as shown in the illustration.
- F. Make sure the adjustable feet are on the bottom.
- G. Attach Rear Stabilizer Bar (B) to Frame (1) using two hex bolts (39), four washers (50), and two lock nuts (51). Tighten hardware firmly but do not over tighten as deformation of the stabilizer tube may occur
- H. At this time make sure that the adjustable feet with lock nuts are screwed fully into the stabilizer.



| Ref. # | Description | Qty |
|---------------|--------------------------------------|------------|
| 1 | Frame | 1 |
| 44 | Pop Pin Assembly for Head Tube | 1 |
| 25 | Handle Bar | 1 |
| 44, 27, 45 | Seat Slider Assembly (Pre-Assembled) | 1 |
| 26 | Seat Post | 1 |
| 67 | Bottle Cage | 2 |

Tools Required

- | | |
|----------------------------------|---|
| Adjustable wrench (not supplied) | 1 |
|----------------------------------|---|
- A. Remove the Pop Pin Assembly (44) from the small parts bag and add some grease to the threads of the large 21mm nut that will screw into the head tube boss on the bike.
 - B. Thread the Pop Pin Assembly into the head tube boss using a large adjustable wrench, tighten firmly.
 - C. Using your hand grab the T-handle of the Pop Pin, turn it counter-clockwise to make sure it is free of the securing threads and can be pulled freely.
 - D. Insert the Handle Bar (25) into the head tube of the bike while pulling the Pop Pin back. Insert the Handle Bar to the desired height and release the Pop Pin. Make sure the Pop Pin settles into one of the securing holes in the Handle Bar tube. Turn the Pop Pin clockwise threading it into the Pop Pin Assembly and hand tighten. This will secure the Handlebar at the desired height.
 - E. Using your hand, grab the T-handle of the Pop Pin attached to the seat tube, turn it counter-clockwise to make sure it is free of the securing threads and can be pulled freely.
 - F. Insert the Seat Post (26) into the seat tube while pulling the Pop Pin back. Insert the Seat Post to the desired height and release the Pop Pin. Make sure the Pop Pin settles into one of the securing holes in the Seat Post tube. Turn the Pop Pin clockwise threading it into the Pop Pin Assembly and hand tighten. This will secure the Seat Post at the desired height.
 - G. The Seat Slider Assembly (44,27,45) has been pre-assembled at the factory. Insert the front (saddle nose side) of the Seat Slider Assembly into the back of the seat post slider tube (horizontal tube at the top). There is a small spring pin at the rear of the slider tube on the Seat Post that must be depressed to allow the Seat Slider Assembly to fully attach to the Seat Post. This can be accomplished by laying the Seat Slider Assembly on the spring pin, push down on the entire Seat Slider Assembly so that the spring pin is depressed. While pulling down on the Pop Pin push the Seat Slider Assembly onto the seat post slider tube. When the Seat Slider has moved far enough forward the spring pin will pop out of the back. This secures the Seat Slider to the seat post tube and prevents it from inadvertently separating from the seat post slider tube.
 - H. Using a 3mm Hex Wrench, remove the screws pre-assembled to the fork legs of the bike. Position the bottle cage (67) on the side of the bike and tighten the screws securely to the fork leg.



| Ref. # | Description | Qty |
|---------------|---|------------|
| 1 | Frame | 1 |
| 42 | Pedals with Toe Clips & Straps (Left & Right) | 1 Pair |

Tools Required

| | |
|----------------------------------|---|
| Stamped Steel Combination Wrench | 1 |
|----------------------------------|---|

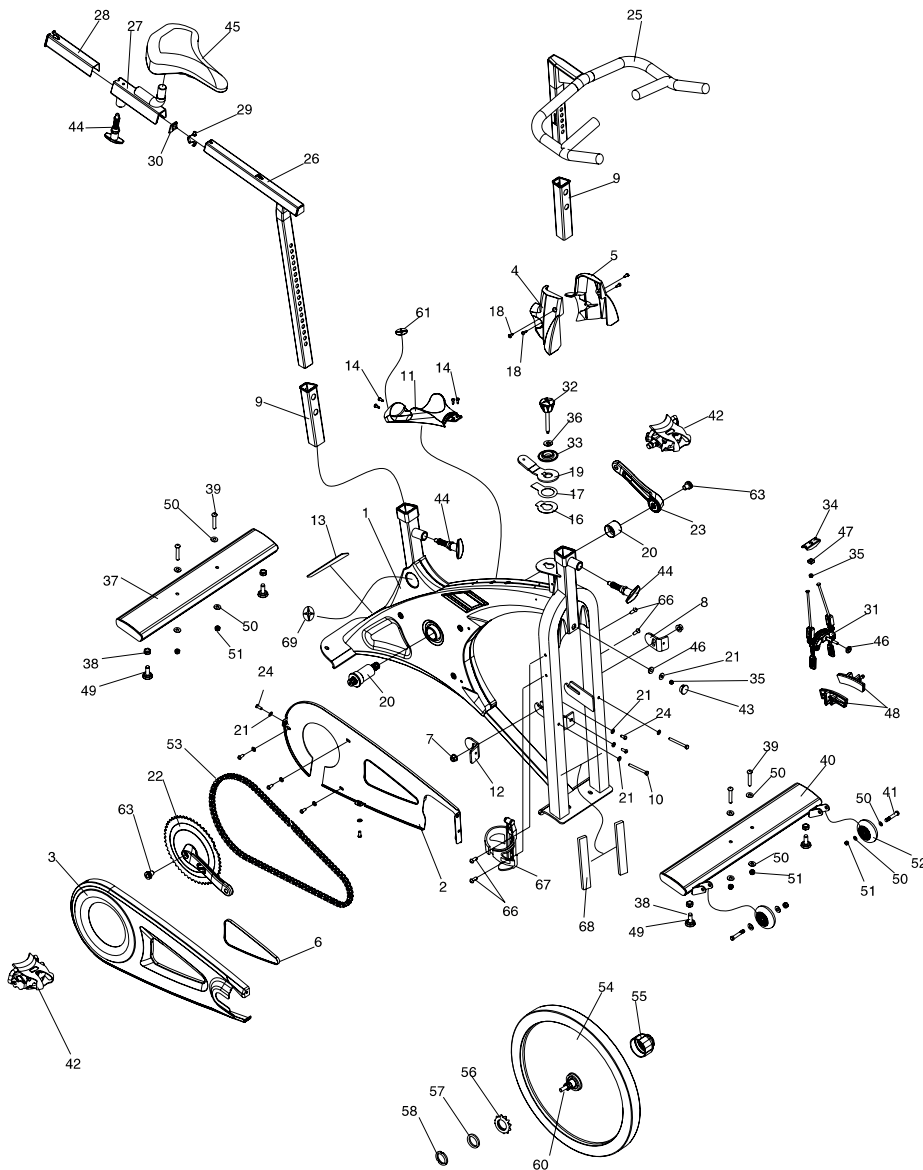
- A. Remove pedals (42) from the small parts box and look at the ends of the pedal threads. You will notice that each pedal is marked with an "R" or an "L" on the very end of the spindle past the threads. This mark indicates which side of the bike the pedal is intended to mount. This is important since the thread directions are different for each pedal.
- B. Locate the pedal that has the "R" on the spindle. This pedal is for the right side crank arm of the bike (chain guard side) and is right hand threaded (turn clockwise to tighten). It is a good idea to apply grease to the threads before attaching them to the crank, this will assure that they can be removed in the future. Using the supplied Combination Wrench thread the right pedal on to the crank arm, tighten firmly.
- C. Locate the pedal that has the "L" on the spindle. Follow the directions in step B, however, you will need to turn the spindle left (counter-clockwise) to tighten as the "L" spindle is reverse threaded.

Prior to first using the Schwinn Evolution bike it is a good idea to follow these initial set up steps.

- A. Move bike into its final location. Confirm that all four feet are firmly in contact with the floor and that the bike is stable. If any of the feet are not making full contact it is recommended that you adjust them by turning the entire foot assembly counter-clockwise which will extend it further from the stabilizer bar. Once the foot is in full contact and the bike is stable, thread the jam nut clockwise until it comes into contact with the stabilizer at the point the foot assembly threads in. Tighten the jam nut snug using an adjustable wrench. This will secure the foot at the desired height.
- B. With the resistance adjustment knob turned fully in the counter-clockwise position (no brake contact with flywheel) it is recommended that you soak the brake pads with Schwinn Fit-Tech Lube. This will extend the life of the brake pads and assure a smooth resistance interface with the flywheel.
- C. Once the pads are lubricated it is recommended that you tighten the resistance adjustment knob clockwise to tighten the brake pads against the flywheel surface. Do this until the brake pads are firmly clamped against the flywheel. This will set the brake parts and give the springs some initial compression. This process will also assure that the Fit-Tech Lube penetrates the entire brake pad surface.
- D. Confirm that the Saddle is positioned in the desired location on the saddle mounting bracket. If the angle of the saddle or the fore/aft position of the saddle needs to be adjusted, use the Combination Wrench to loosen the 14mm nuts on either side of the saddle mounting bracket. This will allow you to adjust the tilt angle and fore/aft position of the saddle. Once in the correct position, tighten both 14mm nuts on the saddle mounting bracket with the Combination Wrench.

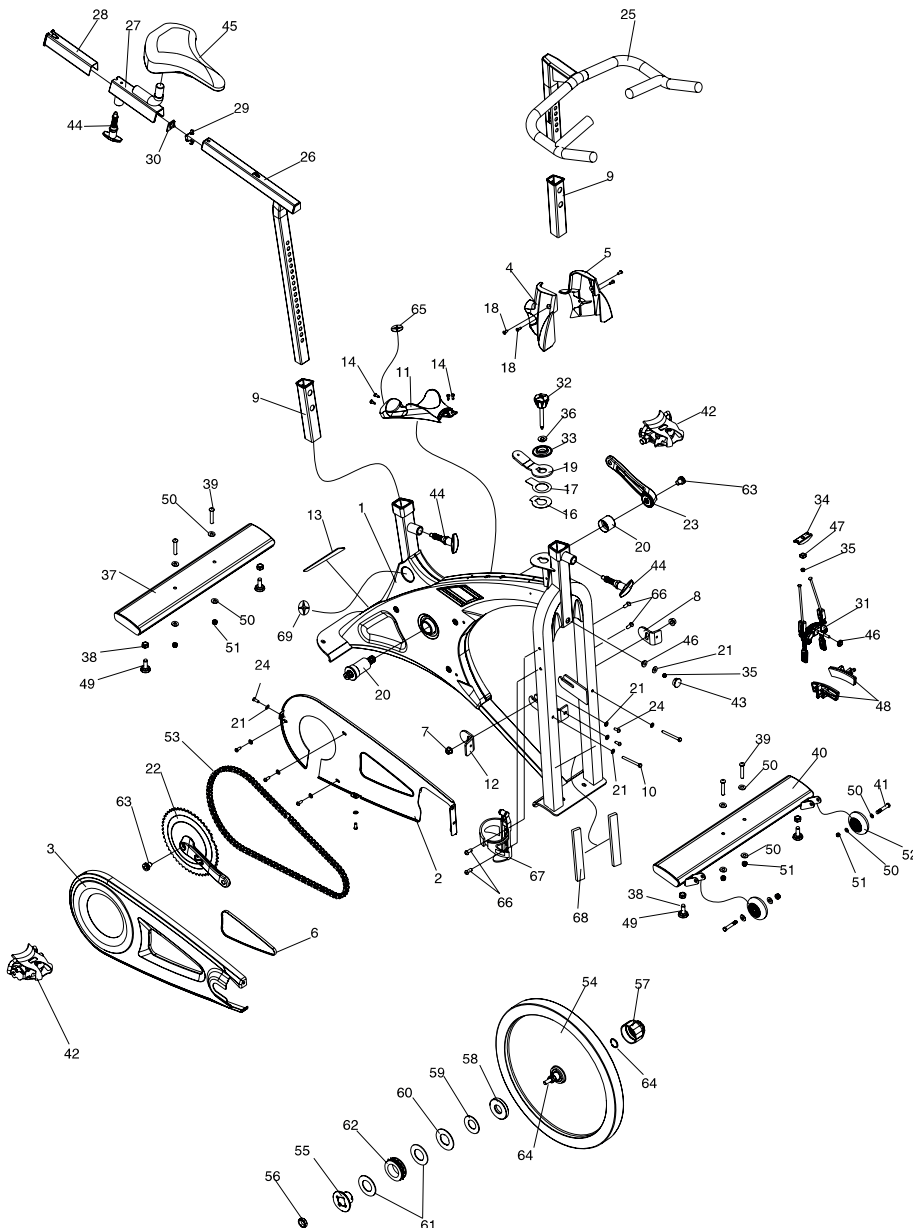
That's it! Initial set up is complete and you can now enjoy all these features and quality of your new Schwinn Evolution Bike!

EVOLUTION



| Dwg# | Description | Part # |
|------|--------------------------------------|--------|
| 1 | FRAME | 84985 |
| 2 | CHAINGUARD (INNER) | 84986 |
| 3 | CHAINGUARD (OUTER) | 84982 |
| 4 | SHROUD (RIGHT) | 80011 |
| 5 | SHROUD (LEFT) | 80010 |
| 6 | RUBBER RING FOR OUTER CHAINGUARD | 80003 |
| 7 | STAINLESS STEEL AXLE NUT 3/8X26TX11T | 95149 |
| 8 | CHAIN ADJUST BRACKET (LEFT) | 84987 |
| 9 | SLEEVE FOR FRAME | 80001 |
| 10 | STAINLESS CHAIN TEN. BOLT M6X1.0X60L | 84988 |
| 11 | BOTTLE HOLDER | 80012 |
| 12 | CHAIN ADJUST BRACKET (RIGHT) | 84989 |
| 13 | RUBBER FRAME GUARD | 80014 |
| 14 | STAINLESS SELF-TAPPING SCREW M5X12L | 80040 |
| 16 | PROTECTIVE PLASTIC STICKER (B) | 80041 |
| 17 | PROTECTIVE PLASTIC STICKER (A) | 80042 |
| 18 | MACHINE SCREW M5X.08X12L SS | 84957 |
| 19 | EMERGENCY BRAKE LEVER | 80009 |
| 20 | B.B. SET, OVERDRIVE W/BOLTS 68X113L | 84990 |
| 21 | STAINLESS WASHER 16 X 6.5 X1 | 95431 |
| 22 | RIGHT CRANK W/SPOCKET, ISIS M12 | 80034 |
| 23 | LEFT CRANK ARM , ISIS | 80035 |
| 24 | STAINLESS HEX HEAD BOLT M6X1.0X12L | 95432 |
| 25 | HANDLEBAR BLACK TEXTURED | 84991 |
| 26 | SEAT POST, STAINLESS | 84992 |
| 27 | SEAT ADJUSTMENT BRACKET | 84993 |
| 28 | SLEEVE FOR SEAT SLIDER | 80002 |
| 29 | SEAT RETAINING PIN | 80006 |
| 30 | RETAINING PIN COVER | 80013 |
| 31 | RESISTANCE ASSEMBLY | 80008 |
| 32 | TENSION ADJUSTING KNOB | 80017 |
| 33 | TENSION KNOB RING | 80005 |
| 34 | ROD CARRIER | 80007 |
| 35 | NUT FOR RES. ASSM. M6X1.0 SS | 95456 |
| 36 | PLASTIC BALL RING | 80004 |
| 37 | REAR STABILIZER | 84984 |
| 38 | HEX NUT FOR LEVELING FEET 3/8 | 80016 |
| 39 | STAINLESS HEX HEAD BOLT M8X1.25X50L | 80030 |
| 40 | FRONT STABILIZER | 84983 |
| 41 | BOLT TRANSPORT WHL M8X1.25X45L SS | 92218 |
| 42 | PEDALS 9/16" | 95129 |
| 43 | FRAME PLUG FOR BRAKE ASSM. | 92206 |
| 44 | T-HANDLE POP PIN DOUBLE LEAD | 84994 |
| 45 | SEAT, 7777-1, BLACK | 93092 |
| 46 | YELLOW PLASTIC BUSHING SET OF 2 | 92204 |
| 47 | SQUARE NUT | 98022 |
| 48 | BRAKE PADS | 92874 |
| 49 | LEVELER FOOT | 84995 |
| 50 | WASHER 19 X 8.5 X 1MM SS | 95426 |
| 51 | SCREW NUT M8 X 1.25 SS | 91731 |
| 52 | TRANSPORTATION WHEEL | 92220 |
| 53 | CHAIN 106L 1/2X3/32" | 80043 |
| 54 | FLYWHEEL COMPLETE SET | 84996 |
| 55 | HUB SHELL PLASTIC COVER | 92451 |
| 56 | SPOCKET 16t (BLACK) | 84997 |
| 57 | SPROCKET WASHER | 95457 |
| 58 | LOCK NUT | 95450 |
| 60 | AXLE SET | 95125 |
| 61 | BADGE SCHWINN LOGO 33MM | 80047 |
| 63 | CRANK BOLT - 1EA M12 | 80044 |
| 66 | BOTTLE CAGE BOLT M5X.8 X16L | 95428 |
| 67 | BOTTLE CAGE | 84998 |
| 68 | RUBBER FRAME GUARD STRIP | 84999 |
| 69 | BADGE SCHWINN LOGO 40MM | 80048 |

EVOLUTION-SR



| Dwg# | Description | Part # |
|------|--------------------------------------|--------|
| 1 | FRAME | 84985 |
| 2 | CHAINGUARD (INNER) | 84986 |
| 3 | CHAINGUARD (OUTER) | 84982 |
| 4 | SHROUD (RIGHT) | 80011 |
| 5 | SHROUD (LEFT) | 80010 |
| 6 | RUBBER RING FOR OUTER CHAINGUARD | 80003 |
| 7 | STAINLESS STEEL AXLE NUT 3/8X26TX11T | 95149 |
| 8 | CHAIN ADJUST BRACKET (LEFT) | 84987 |
| 9 | SLEEVE FOR FRAME | 80001 |
| 10 | STAINLESS CHAIN TEN. BOLT M6X1.0X60L | 84988 |
| 11 | BOTTLE HOLDER | 80012 |
| 12 | CHAIN ADJUST BRACKET (RIGHT) | 84989 |
| 13 | RUBBER FRAME GUARD | 80014 |
| 14 | STAINLESS SELF-TAPPING SCREW M5X12L | 80040 |
| 16 | PROTECTIVE PLASTIC STICKER (B) | 80041 |
| 17 | PROTECTIVE PLASTIC STICKER (A) | 80042 |
| 18 | MACHINE SCREW M5X.08X12L SS | 84957 |
| 19 | EMERGENCY BRAKE LEVER | 80009 |
| 20 | B.B. SET, OVERDRIVE W/BOLTS 68X113L | 84990 |
| 21 | STAINLESS WASHER 16 X 6.5 X1 | 95431 |
| 22 | RIGHT CRANK W/SPOCKET, ISIS M12 | 80034 |
| 23 | LEFT CRANK ARM , ISIS | 80035 |
| 24 | STAINLESS HEX HEAD BOLT M6X1.0X12L | 95432 |
| 25 | HANDLEBAR BLACK TEXTURED | 84991 |
| 26 | SEAT POST, STAINLESS | 84992 |
| 27 | SEAT ADJUSTMENT BRACKET | 84993 |
| 28 | SLEEVE FOR SEAT SLIDER | 80002 |
| 29 | SEAT RETAINING PIN | 80006 |
| 30 | RETAINING PIN COVER | 80013 |
| 31 | RESISTANCE ASSEMBLY | 80008 |
| 32 | TENSION ADJUSTING KNOB | 80017 |
| 33 | TENSION KNOB RING | 80005 |
| 34 | ROD CARRIER | 80007 |
| 35 | NUT FOR RES. ASSM. M6X1.0 SS | 95456 |
| 36 | PLASTIC BALL RING | 80004 |
| 37 | REAR STABILIZER | 84984 |
| 38 | HEX NUT FOR LEVELING FEET 3/8 | 80016 |
| 39 | STAINLESS HEX HEAD BOLT M8X1.25X50L | 80030 |
| 40 | FRONT STABILIZER | 84983 |
| 41 | BOLT TRANSPORT WHL M8X1.25X45L SS | 92218 |
| 42 | PEDALS 9/16" | 95129 |
| 43 | FRAME PLUG FOR BRAKE ASSM. | 92206 |
| 44 | T-HANDLE POP PIN DOUBLE LEAD | 84994 |
| 45 | SEAT, 7777-1, RED | 92202 |
| 46 | YELLOW PLASTIC BUSHING SET OF 2 | 92204 |
| 47 | SQUARE NUT | 98022 |
| 48 | BRAKE PADS | 92874 |
| 49 | LEVELER FOOT | 84995 |
| 50 | WASHER 19 X 8.5 X 1MM SS | 95426 |
| 51 | SCREW NUT M8 X 1.25 SS | 91731 |
| 52 | TRANSPORTATION WHEEL | 92210 |
| 53 | CHAIN 106L 1/2X3/32" | 80043 |
| 54 | FLYWHEEL COMPLETE SET | 92207 |
| 55 | FLANGED HUB LOCK NUT | 92214 |
| 56 | BEARING RETAINER RING | 92458 |
| 57 | HUB SHELL PLASTIC COVER | 92451 |
| 58 | INNER ADJ SR PLATE | 92452 |
| 59 | CONICAL SPRING | 92208 |
| 60 | INTERFACING PLATE TO BRAKE PADS | 92453 |
| 61 | SR BRAKE PAD SET, WHITE U.H.P. | 92213 |
| 62 | HUB SPOCKET W/BEARING | 98419 |
| 63 | CRANK BOLT - 1EA M12 | 80044 |
| 64 | AXLE SET | 98414 |
| 65 | BADGE SCHWINN LOGO 33MM | 80047 |
| 66 | BOTTLE CAGE BOLT M5X.8 X16L | 95428 |
| 67 | BOTTLE CAGE | 84998 |
| 68 | RUBBER FRAME GUARD STRIP | 84999 |
| 69 | BADGE SCHWINN LOGO 40MM | 80048 |



Nautilus Health & Fitness Group • 1886 Prairie Way • Louisville, CO 80027
© 2003 Nautilus, Inc. • SCHWINNFITNESS.COM
1.800.864.1270

SCHWINN[®] FITNESS